



High Sensitivity CMOS Relays

The Tempatron high sensitivity CMOS relays operate from a wide ranging 3.5Vdc to 50Vdc input and have 2 pole isolated changeover output relay contacts, making them ideal for use with CMOS devices.

A Darlington pair in the input circuitry gives these relays very sensitive input switching, together with a wide ranging input voltage and very low current requirements.

These relays are available in 12Vdc and 24Vdc versions and are housed in a compact 36mm x 36mm square enclosure for surface/DIN rail mounting to a socket.

Models Available

HSR-12VDC CMOS Relay 12Vdc

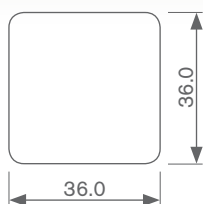
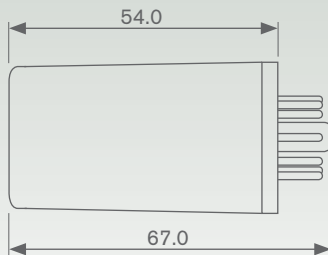
HSR-24VDC CMOS Relay 24Vdc

Product Features

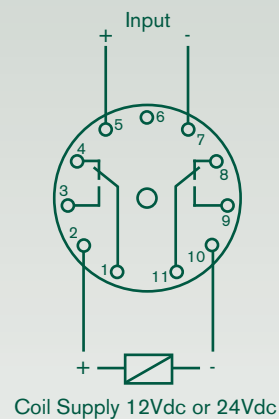
- High sensitivity input circuit
- 2 pole changeover relay output
- Ideal for use with CMOS devices
- Available in 12Vdc or 24Vdc versions
- Plug-in sockets also available

High sensitivity relays ideal for switching from CMOS devices

Dimensions



Connections



[View on pins](#)

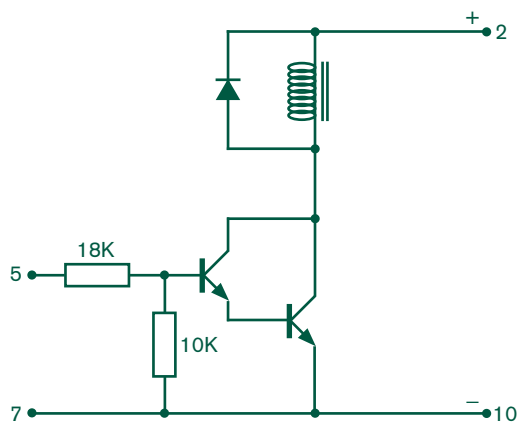
Ordering information

Model	Code	Description
	HSR	High Sensitivity CMOS Relay

Auxiliary Power	Code	Description
	12VDC	12Vdc
	24VDC	24Vdc

Plug-in Bases	Code	Description
	CDSR11	11 Pin Rear Screw Panel Socket
	AZ611	11 Pin DIN Rail/Panel Mount Socket
	S11P	11 Pin DIN Rail/Panel Mount Socket

Example	HSR-24VDC
---------	-----------

Equivalent Circuit**Specification****Minimum Input Voltage:**

- 3.5Vdc

Maximum Input Voltage:

- 50Vdc

Input Current:

- 125 μ A @ 3.5V
- 240 μ A @ 5V
- 800 μ A @ 15V
- 1.75mA @ 50V

Coil Voltage:

- 9-15Vdc (12Vdc version)
- 18-30Vdc (24Vdc version)

Maximum Coil Current:

- 75mA (12Vdc version)
- 37mA (24Vdc version)

Relay Output:

- 2 pole changeover contacts

Contact Rating:

- 10A at 240Vac/30Vdc (resistive)

Contact Material:

- AgNi90/10

Operating Temperature:

- 0°C to 50°C

Enclosure Code:

- Case IP40

Weight:

- 60g

Markings:

- CE marked (meets EN61010-1 low voltage and EN50081-1/50082-1 EMC directives)

Specification subject to change without notice.

Tempatron: Eltime House, Hall Road, Maldon, Essex, CM9 4NF UK.

TEMPATRON

Tempatron Industrial Controls is a division of Eltime Ltd.

© Eltime Ltd. Tempatron CMOS Relays 04/2011